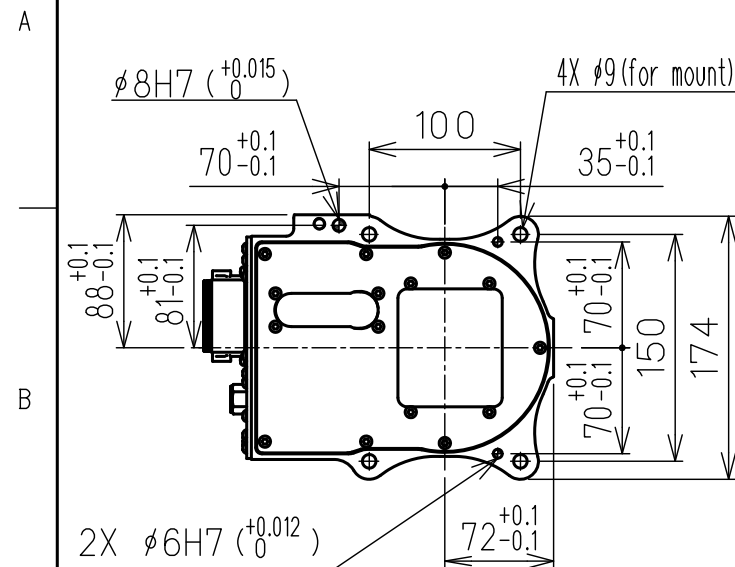
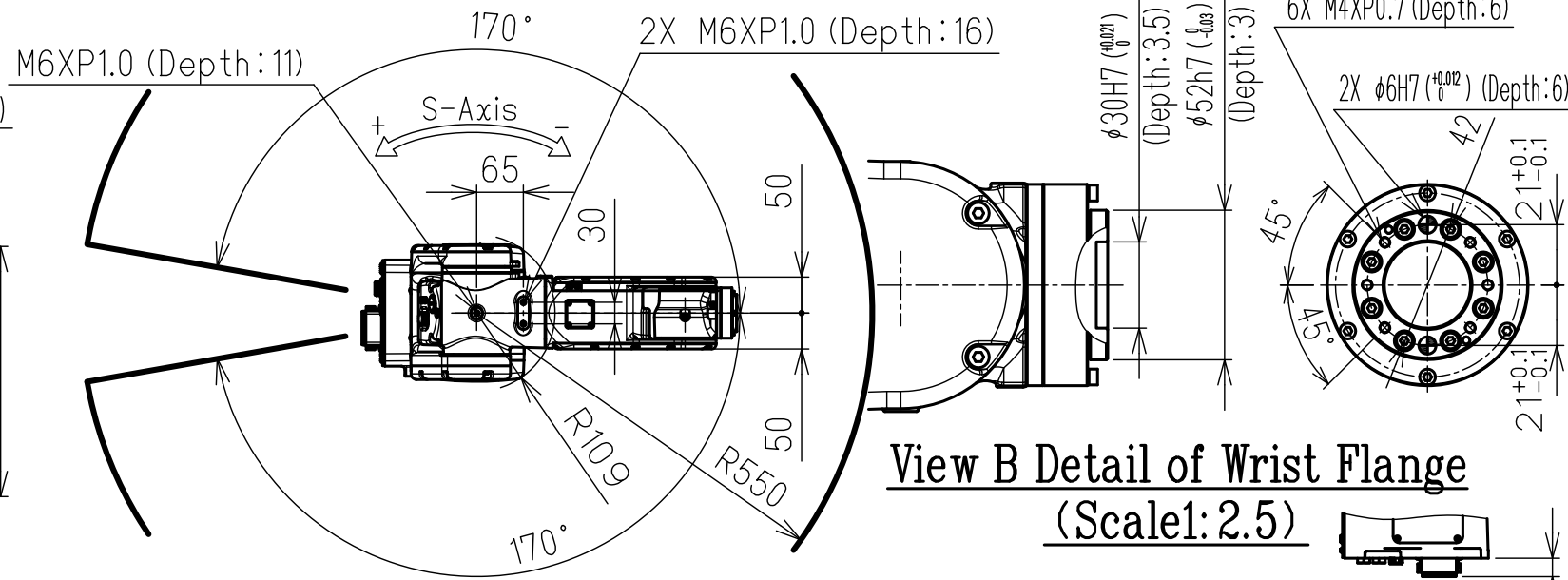


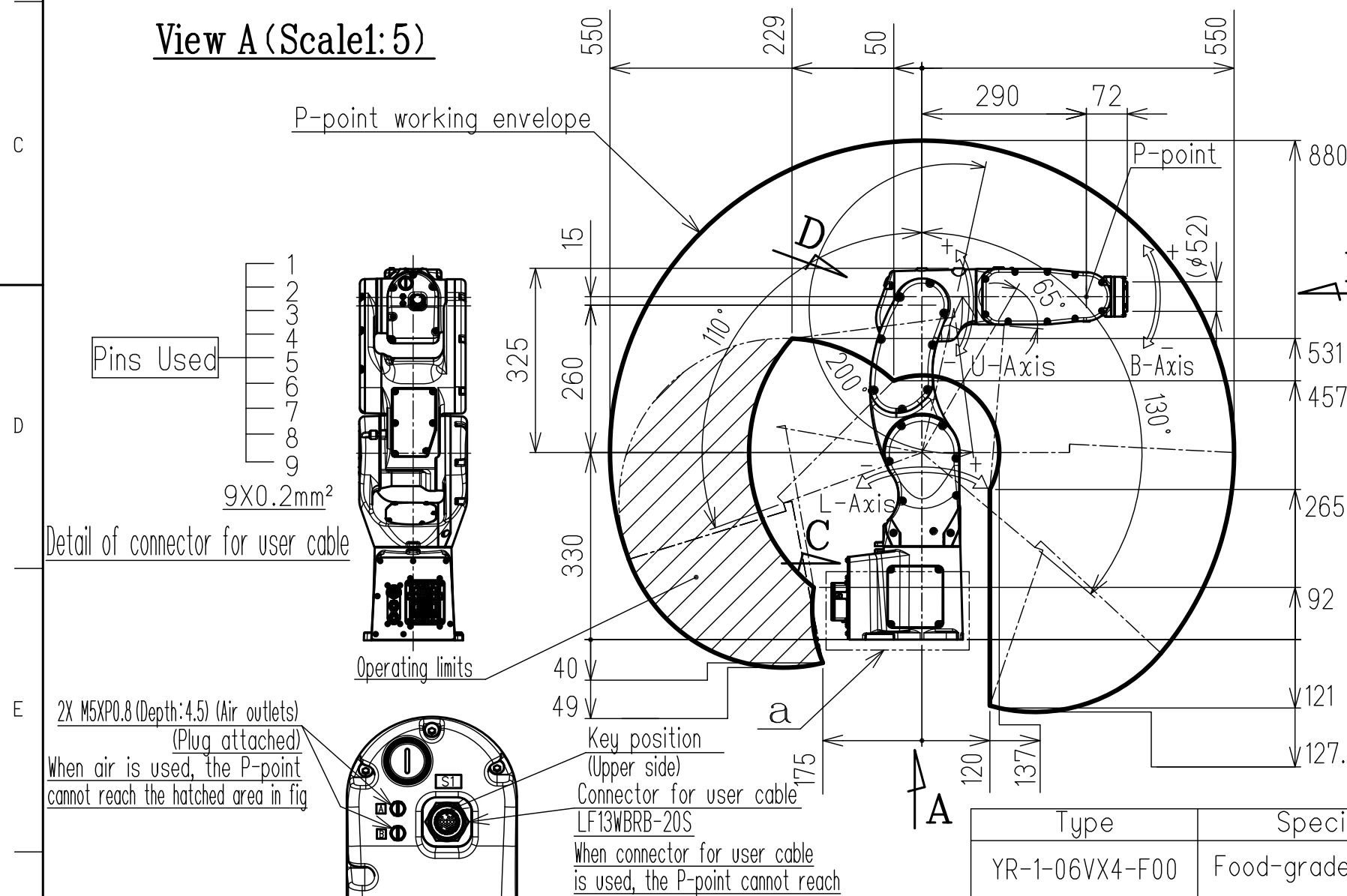
DWG.NO. HW2380322



View A (Scale 1:5)

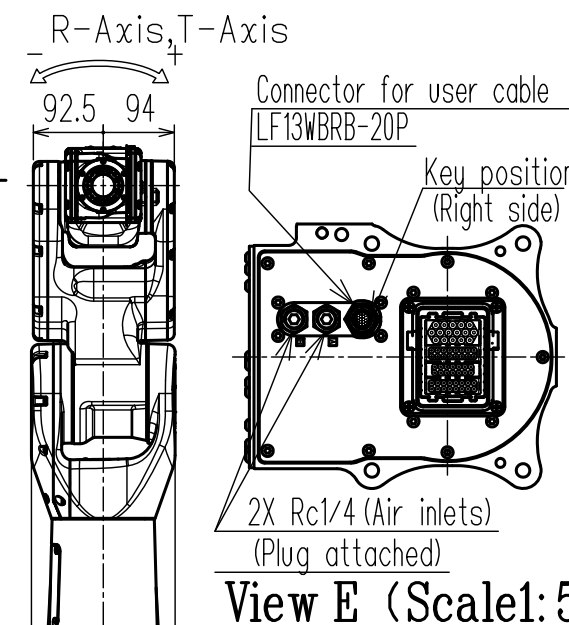


View B Detail of Wrist Flange  
(Scale 1:2.5)

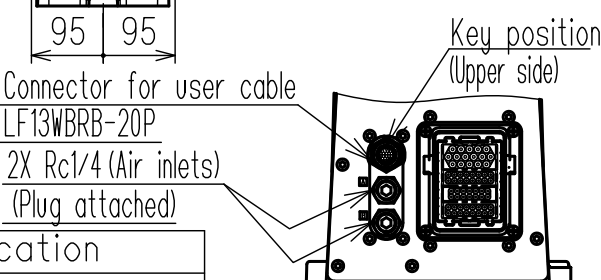


View D (Scale 1:3)

Detail of a  
(When power cable is led out downward)



View E (Scale 1:5)



View C (Scale 1:5)

Type	Specification
YR-1-06VX4-F00	Food-grade grease type
YR-1-06VX4-F02	Food-grade grease type Anti-corrosive coat

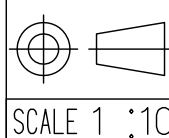
Item	Model	MOTOMAN-GP4
Configuration		Vertically articulated
Degree of freedom		6
Payload	Wrist	4kg
	On U-arm (*1)	1kg
Repeatability (*2)		0.01mm
Range of motion	S-axis	-170° - +170°
	L-axis	-110° - +130°
	U-axis	-65° - +200°
	R-axis	-200° - +200°
	B-axis	-123° - +123°
	T-axis	-455° - +455°
Maximum speed (*3)	S-axis	8.11rad/s, 465° /s
	L-axis	8.11rad/s, 465° /s
	U-axis	9.16rad/s, 525° /s
	R-axis	9.86rad/s, 565° /s
	B-axis	9.86rad/s, 565° /s
	T-axis	17.45rad/s, 1000° /s
Allowable moment	R-axis	8.86Nm (0.90kgfm)
	B-axis	8.86Nm (0.90kgfm)
	T-axis	4.9Nm (0.50kgfm)
Allowable inertia (GD²/4)	R-axis	0.2kg·m²
	B-axis	0.2kg·m²
	T-axis	0.07kg·m²
Mass		28kg
Protection rating		IP67
Clean rating (reference) (*4)		Equivalent to ISO class 5
Mounting method		Floor-mounted, Wall-mounted Tilt-mounted, Ceiling-mounted
Ambient conditions	Temperature	0°C-45°C
	Humidity	20%RH-80%RH (Non-condensing)
	Vibration acceleration	4.9m/s² (0.5G) or less
	Altitude	1000m or less
	Flatness for installation	0.5mm or less
	Others	•Free from oil soot. •Free from explosive and corrosive gas or liquid. •Free from excessive electrical noise (plasma). •Free from strong magnetic field.
Power requirements (*5)		1KVA
Applicable controller		YRC1000/YRC1000micro

- \*1 Load on the U-arm will vary depending on the load weight of the wrist part.  
 \*2 Repeatability conforms to ISO 9283.  
 \*3 The maximum speed in this table is the available maximum value and will vary depending on the load, posture, or range of motion.  
 \*4 The clean rating is for reference and not guaranteed.  
 \*5 The power requirement value is obtained using YASKAWA's in-house measurement conditions and will vary depending on the load, motion pattern, or cycle time.  
 \*6 The posture in this drawing is in the home position.

Units:mm

Note:  
 1.All rights reserved.  
 2.Please note that the data is subject to be deleted without advance notice.  
 3.No warranty is given in relation to the data including the specification.  
 4.We are not responsible for any damages or loss caused by the use of the data.

FOR STUDY PURPOSE ONLY



**YASKAWA**  
 株式会社 安川電機

Reference Drawing

TITLE MOTOMAN-GP4  
 DIMENSION DIAGRAM

DRWN DATE Jun.28.' 21  
 DWG.NO. HW2380322

SIZE A 3